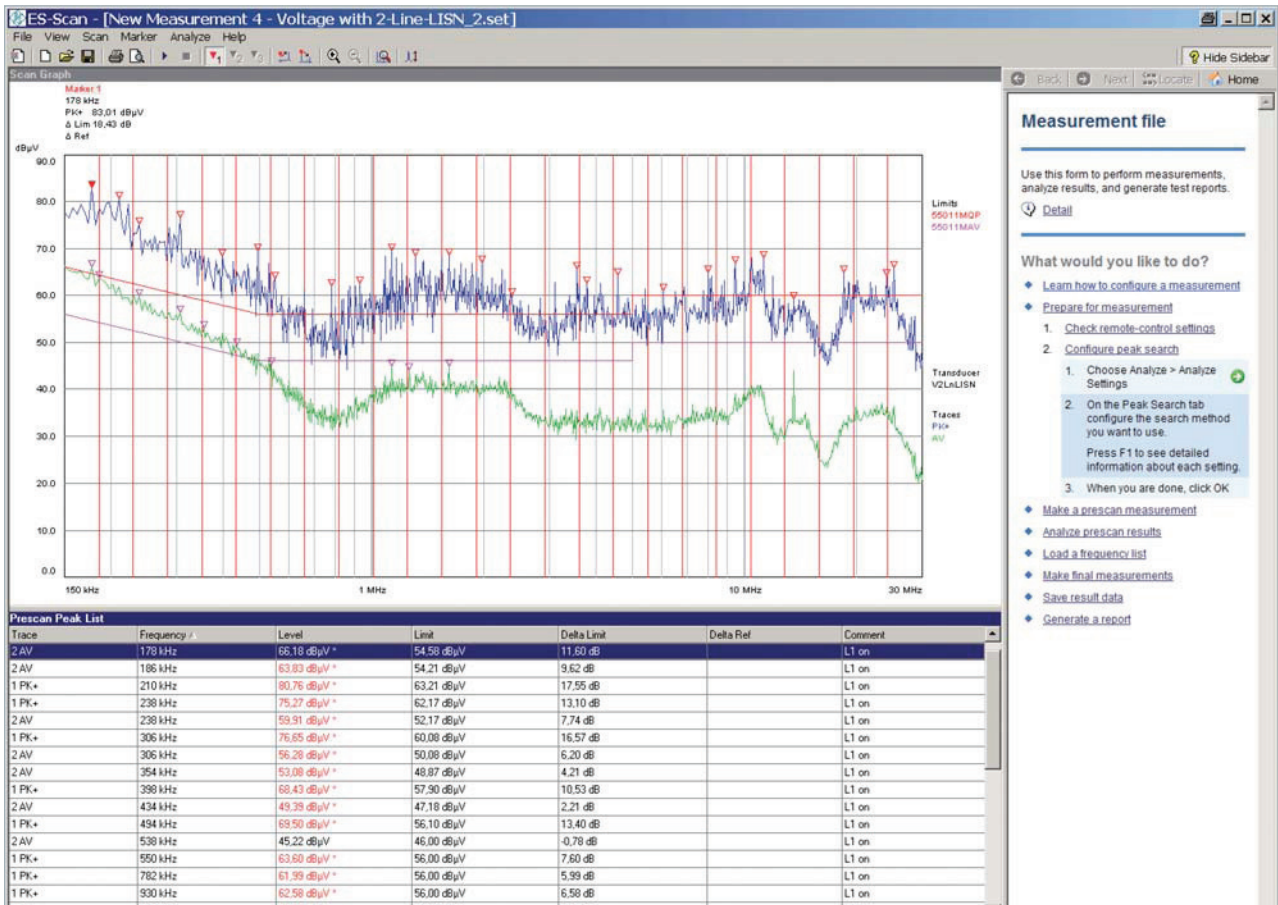


R&S®ES-SCAN

EMI Measurement Software



User-friendly software for EMI measurements

R&S®ES-SCAN is a cost-efficient and user-friendly 32-bit Windows software application that has been developed for Rohde&Schwarz test receivers and spectrum analyzers. The main requirements of EMI measurements in accordance with commercial standards have been combined in an easy-to-use application: measurement settings and storage, scan data acquisition and display with automatic data reduction, peak search with acceptance limit and selection of sub-ranges, final measurement with worst-case selection, report generation, and measurement data storage.

R&S®ES-SCAN offers all the advantages of a state-of-the-art software tool, including operation via keyboard and mouse, table editor, configurable report generation, and printout of reports on any Windows printer. An assistant supports the user of the R&S®ES-SCAN EMI software at any stage of operation. Online help texts explain all software functions; an operating manual is therefore not required.

- Menu-controlled configuration of test receiver and storage of settings on controller, including limit lines and transducer factors
- Reliable acquisition, evaluation, and documentation of measurement data
- Graphical display of scan data with automatic data reduction
- Marker function, including "Marker to Peak" and "Tune Receiver to Marker Frequency"
- Automatic peak search with selectable acceptance limit and selectable subranges
- Editable frequency list for automatic or semi-automatic final measurements
- "Fine Tuning" function for fast detection of local maxima
- Flexible configuration of report generation for different report layouts

More information: www.rohde-schwarz.com, search term: emc32